



WELCOME

A young company with 3 decades of construction acumen - Malls & Multiplex,
Food courts, Hotels, Resorts, Offices

eTree Projects - legacy



Maninderpal Singh
Director
Masters in Energy
Management
from BI School of
Management (world's
foremost Institute in
Energy Management),
IFP, Paris and Nanyang
Technological University,
Singapore.

eTree Projects was started by a result oriented professional with nearly 3 decades experience in entertainment, retail and construction industry. Experience in execution of construction works, building energy saving measures, new technology adaption he brings to the table a multi-dimensional understanding of environmental, technical, legal elements of real estate enterprise & retail infrastructure development and the future of renewable industry in India.

During this process has coordinated with architects and design consultants from across the world like RTKL, HOK, Greg Norman, David Hemstock & associates ,to name a few. An IGBC member and as building energy experts understand the local construction material, products, workers and contractors execution services for civil, interiors, Mechanical, Electrical, Plumbing, HVAC. Experience in the Green field, Brownfield and retrofitting projects.

eTree Projects - A brief note



Customer List -

- Army golf course
- Nuflower Pvt Ltd
- Logix builtech
- Flex industries
- Ardee Group
- Wave Group
- Sahara - Aamby Valley
- Belgium Embassy
- French Embassy
- Cubs Country Pvt Lts
- Tata Solar power
- Jakson Solar Power
- Jindal Steel Limited
- ABES college
- Ramco Industries
- PRIA institute
- Omaxe Ltd
- Suryavardhan estates
- GE
- Orient University
- PDM University

Services -

- Civil works
- Interior works
- Woodworks
- Tiling & wall finishes
- Furniture
- Structural work
- Glazing
- Aluminium works
- Paint works
- Exterior furniture
- Electrical works
- Plumbing
- Air conditioning
- landscaping
- Solar Plant
- STP plant
- Waste management

**eTree
Turnover
13.5 crore**

eTree Projects is a team of result oriented professionals with 3 decades experience in the built environment. Construction of large commercial spaces, hotels, resorts, office spaces, factories, colleges & schools. The team brings over 140 man-years experience in Urban Infrastructure Development and more than 2.6 billion square feet (6,200 acres) of developed land to its credit. Our objective is to progress with clean natural resources using value engineering & business ethics. Execution of construction works, incorporating energy saving measures and new technologies. Our team consists of engineers, supervisors, workers in the field of **civil construction, MEP, and interiors and Solar projects**. Complete in house team of draftsman, interior designers, engineers, skilled manpower for woodworks, tiling works, wall finishes, structural engineers. execution services.

Team eTree has incorporated energy saving products and processes both in planning, procurement and processes. We have completed **5 MW rooftop solar plant installation in 2018**. Effective air conditioning plants. Construction work using latest technology. Effective EHS policy and human resource management and complete government compliances are adhered to.

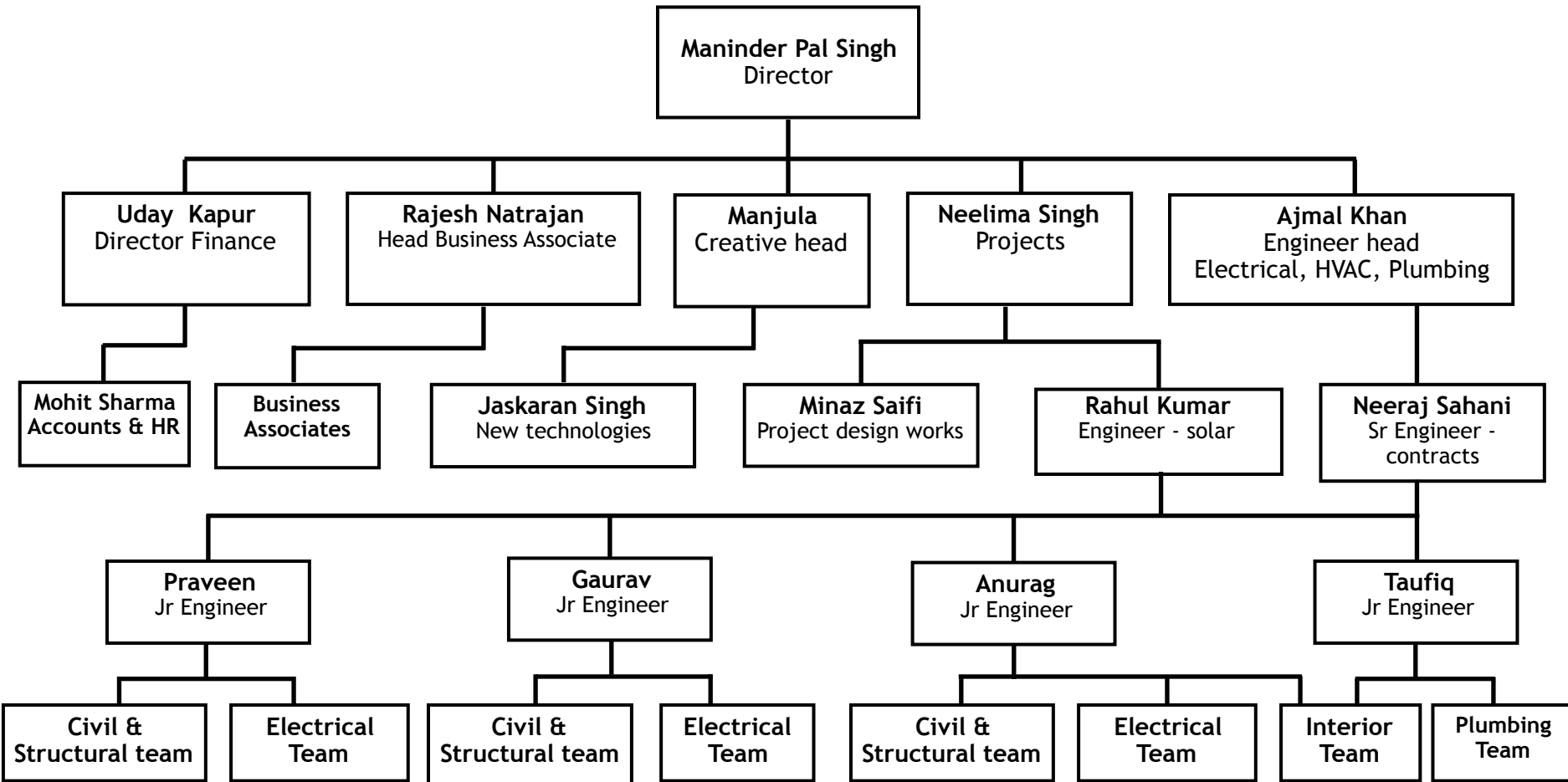
Certifications-

SMERA Financial rating B+
MNRE Channel Partners
ISO 2015 certification

eTree presence -

Uttar Pradesh, Tamilnadu,
Uttrakhand, Maharashtra,
Rajasthan, Haryana Punjab, Madhya
Pradesh, Goa.

eTree - The Organisation



Machine & Tools

Tools

S.No	DESCRIPTION	QUANTITY
.		
1	Crimping Tool 25 – 400 sq mm	4 nos
2	Crimping Tool 4- 16 sq mm	3nos
3	Crimping Tool 2.5 – 4 sq mm	2nos
4	Tightening machine 18 volt	5nos
5	Tightening Machine 12 volt	3 nos
6	Riveting machine	1 nos
7	Power Panels	3 Nos.
8	Light poles	6 nos
9	Water Pump 1" to 3"	2nos electric
10	Mortar Pump & Plaster Sprayer	1 nos
11	Extension reels	6 nos
12	Extension cords	4 nos
13	120 sq mm	100 mts
14	95 sq mm	50 mts
15	35 sqmm 3.5 core	200 mtrs
16	16 sq mm 2 core	150 mtrs
17	Draw and cutting machine	2 nos
18	Wrenches large for plumbing	6 nos
19	Acrylic cutting machine	1 nos
20	AC DC clamp meters	6 nos
21	Megger 2000 megaha ohms	2 nos
22	Earthing Meter	2 nos
23	Scaffolding ladder with wheels	2 nos
24	Floor Polishing Machine	3 Nos.
25	Marble Cutting Machine 8'	1 Nos.
26	Marble Cutting Machine 2'	1 Nos.
27	Marble Cutter Portable	6 Nos.
28	Shuttering	11000 sqft.

29	Angle Grinder	4
30	Cordless impact wrench	10
31	Cutter machine	2
32	Drill machine	12
33	Hammer machine	4
34	Welding machine	4
35	Planner machine	2
36	Router	1

Wood workshop

SNo	DESCRIPTION	QUANTITY
.		
1	Saw Machine 48"	03 Nos.
2	Saw Machine 24"	01 Nos.
3	Disc Saw	02 Nos.
4	Planners 12" automatic	02 Nos.
5	Spindle Molding Machine	02 Nos.
6	Chain Mortising Machine	02 Nos.
7	Electric Planners	04 Nos.
8	Electric & Petrol Chain Saws 12" & 18"	02 Nos.
9	Multi Wood Working Machines, Heavy Duty (Swedish Make)	02 Nos.
10	Assorted small specialized wood working Machines	Lot

Metal works

S No.	DESCRIPTION	QUANTITY
1	Fully equipped workshop under the Supervision of an experienced foreman.	
2	Automatic Hack Saw	01 Nos.
3	Portable Drill Machine	12 Nos.
4	Drill Machines (Heavy Duty)	04 Nos.
5	Portable Welding sets	04 Nos.
6	Welding Sets (3 - Phase)euro ARC400	1 Nos.
7	Welding Generator	01 Nos.
8	Press for Light Work	02 Nos.
9	Grinders 4" & 6"	12 Nos.
10	Shear Machine (Plate & Section)	02 Nos.
11	Angle Grinders	1 Nos.
12	Angle Cutters	02 Nos.
13	Gas Welding & Cutter	02 Sets
14	Electric Hammers	06 Nos.
15	Electric Generator Sets 3.5 KVA	1 Nos.
16.	Buffing Machine on stand	02 Nos.

Machine & Tools

Machines

S.No	DESCRIPTION	QUANTITY
1	Shuttering for structure (Pedestals) - Circular - 300 DIA	350
2	Shuttering for structure (Pedestals) - Square - 400x400x400mm	250
3	Shuttering for structure (Pedestals) - Square - 300x300x250mm	520
4	Shuttering for structure (Pedestals) - Square - 300x300x300mm	300
5	Tractors	5
6	Trolleys - Normal	2
7	Trolleys - Hydraulic	2
8	Water tankers - 1000L with pump	4
9	Diesel tankers - 1000L with pump	4
10	Levellers	4
11	Harrow	2
12	JCB	2
13	Batch mixing - machine	
a	Small	4
b	Medium	5
c	Large	1
14	Fork lift	2
15	Hydra	1

16	Drilling machine	
a	DTH (2.5 mt deep & 300mm Dia)	2
b	Auger (2.5 mt deep & 300 mm Dic)	2
17	DG Sets - 5 Kva	2
18	DG Sets with Height Mask	5
19	Auto (laser) Leveller	3
20	Distribution Box and Electrical Panel	3
21	Pickup Truck	4
22	Pickup Jeep	2
23	Tractor Trolley	1 No.
24	Shovel Dumper	1 No.
25	Self Loading Dumper	1 No.
26	Drum Mixers	1 Nos.
27	Vibrators Petrol & Electric	4 Nos.
28	Mixer Concrete	3 Nos

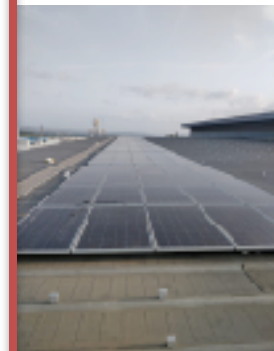
Safety Equipment.

SNO.	DESCRIPTION	QUANTITY
1	Safety Helmet	57
2	Safety Shoes	57
3	Safety glasses	73
4	Safety glove	125
5	Safety Vest	73
6	Fall arrestor	73
7	Shock Absorber	73
8	Nylon rope (20M)	25
9	Carabiner	100
10	Safety belt	73
11	Loose ropes(100M)	15

e-Tree team is it's greatest asset.

Imagination, Insight and Sense define the values embodied in all the people who make eTree. The growing team of eTree comprises of engineers, professionals from varied industries and green technologies. Small teams, well coordinated using latest technology for management practices leads to better output at low overhead costs and wastage. Diversity in thought and commitment in action is what makes dreams come to reality. A committed team of vendors and suppliers, best trade practices ,better man and material management reduces idle costs.





We would like to work for your projects - assist create beautiful and energy efficient spaces - offices, commercial spaces, retail outlets, food courts, clubhouse, residences, exterior landscapes, colleges, hotel & resorts.

Reach us at

www.etreeprojects.com

eTree Project Consultants Pvt Ltd

E - 42, Sector - 63, Noida - 201301

Phone No: 0120 - 4309302,4133920

Mail : info@etreeprojects.com